



Broadband Pakistan

ADSL Installation Guide

ZTE – 831 Series

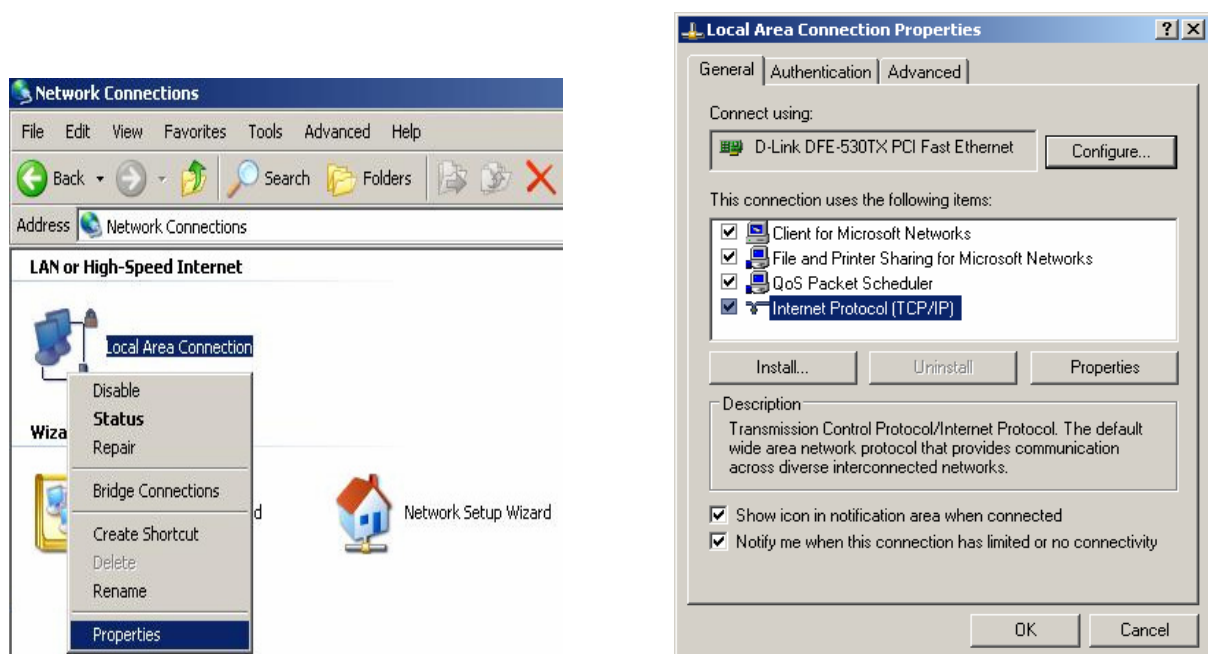
PTCL introduces DSL service for our valued subscribers. We are committed to provide you quality internet services. Please follow the installation instructions and log on to your ADSL broadband link.

Step 1: Connecting to the Splitter, Power Connection & LAN cable.

- 1 Line hole connects to PTCL wire or Wall phone Jack (RJ-11 Jack).
- 2 Modem hole connects to the DSL jack of the ADSL CPE (Customer Premises Equipment).
- 3 Phone hole connects to a telephone set.
- 4 Connect the Power Adapter to the AC power plug and attach the connector of adapter to the CPE and switch it on.
- 5 Attach one end of LAN wire (RJ-45) to the LAN interface of CPE and the other end to the LAN wire to the LAN interface of computer's LAN card.
- 6 Link Indicator lights will lit up and show the connectivity. ADSL light will start blinking and soon will be static as a sign of connectivity with our system, if the line is properly jumpered in PTCL premises with the DSLAM (Digital Subscriber Line Access Multiplexer). Joint less and direct cable line from the nearest PTCL pole or cabinet must be connecting to your splitter and then all the phone extensions must be taken from the phone hole of splitter. The Drop wire distance from PTCL pole or Cabinet must not be ideally more than 50 meters.(Twisted pair wire can be longer)

Step 2: ADSL Configuration in CPE and Computer

1. Go to Start Menu < Control Panel < Network and Internet Connections < Network Connections. Check that the Local Area Connection is enabled. Right click local Area network and click properties. Following window will be shown.

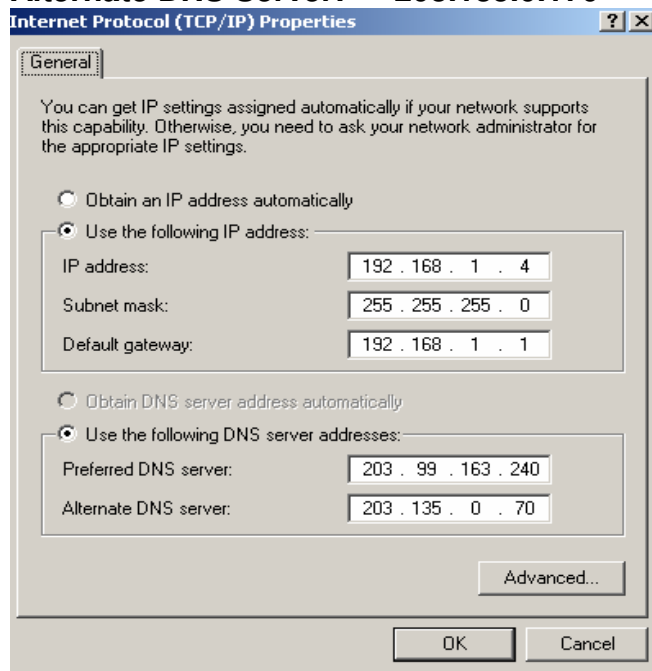


2. Double click “internet protocol (TCP/IP)”, Check “**Use the following IP address**” and make the following settings:

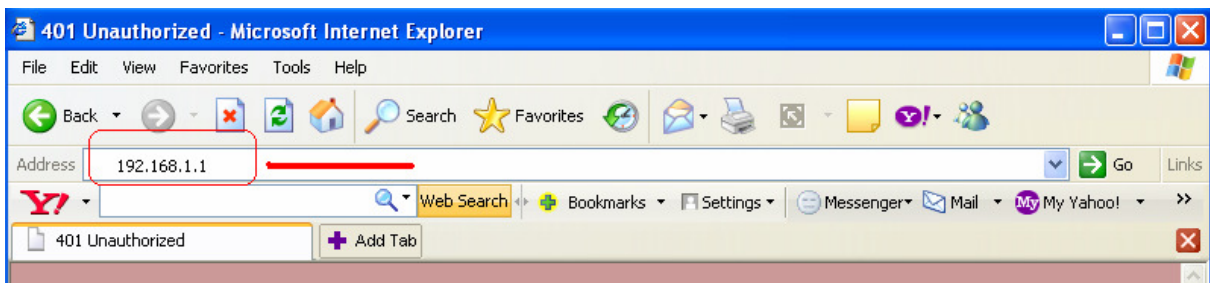
IP Address: 192.168.1.3
Subnet Mask: 255.255.255.0
Gateway: 192.168.1.1

Then, check “**Use the following DNS server addresses**” and make the following settings:

Preferred DNS Server: 203.99.163.240
Alternate DNS Server: 203.135.0.170

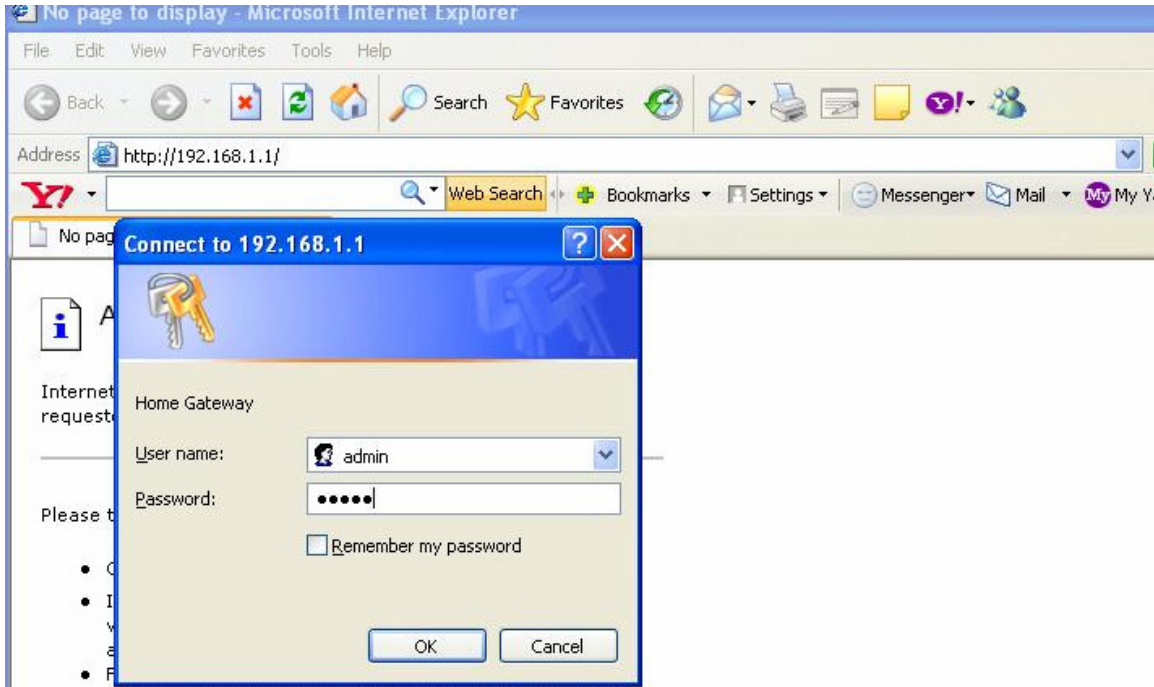


3. Now open Internet Explorer and write “**192.168.1.1**” in address bar and press enter. There must not be any proxy setting in the internet Explorer.

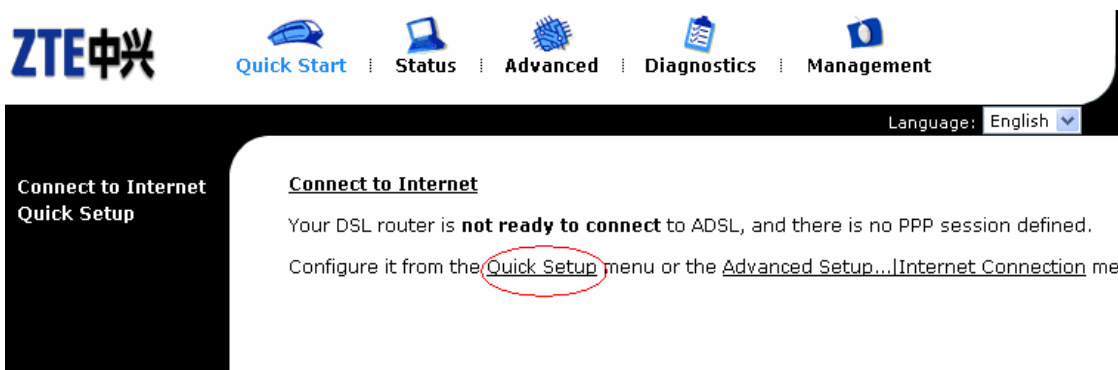


A small pop up window will open as shown in the figure below and ask "User Name" and "Password" for opening the CPE's interface.

Enter **User Name:** "admin" and **Password:** "admin" and press OK.



4. CPE, configuration page will be open with the title **Connect to Internet.** Click the **Quick Setup** link.



5. Quick Setup window will be opened. Enter the VPI & VCI values and click Next:

VPI: 0
VCI: 103

Connect to Internet
Quick Setup

Quick Setup

This Quick Setup will guide you through the steps necessary to configure your DSL Router.

NOTE: All of original settings will be replaced by new settings after you finish these steps.

Configure Internet Connection -- ATM PVC

Please enter VPI and VCI numbers for the Internet connection which is provided by your ISP.

VPI: (0-255)
 VCI: (32-65533)

Next >

6. Configure Internet Connection – Connection Type window will open. Select “**PPP over Ethernet (PPPoE)**” and click Next.

Connect to Internet
Quick Setup

Configure Internet Connection - Connection Type

Select the protocol and encapsulation type over the ATM PVC that your ISP has instructed you to use.

Protocol:

- PPP over ATM (PPPoA)
- PPP over Ethernet (PPPoE)
- MAC Encapsulation Routing (MER)
- IP over ATM (IPoA)
- Bridging

Encapsulation Type:

< Back Next >

7. Configure Internet Connection – WAN IP Settings window is shown. Select “**Obtain an IP address automatically**” and check “**Enable NAT**” and click Next.

The screenshot shows the ZTE router's configuration interface. At the top, there is a navigation bar with the ZTE logo and menu items: Quick Start, Status, Advanced, Diagnostics, and Management. A language dropdown menu is set to English. The main content area is titled "Configure Internet Connection - WAN IP Settings". Below the title, there is a sub-header "Connect to Internet Quick Setup". The instructions state: "Enter information provided to you by your ISP to configure the WAN IP settings." There are two radio button options: "Obtain an IP address automatically" (which is selected and circled in red) and "Use the following IP address:". Below the second option is a text field for "WAN IP Address" containing "0.0.0.0". There is a checked checkbox for "Enable NAT" (also circled in red). At the bottom right, there are two buttons: "< Back" and "Next >".

8. Configure Internet Connection – PPP User Name and Password window is shown. Enter the “**PPP User Name & PPP Password**” as provided by the ISP and click Next.

The screenshot shows the ZTE router's configuration interface. At the top, there is a navigation bar with the ZTE logo and menu items: Quick Start, Status, Advanced, Diagnostics, and Management. A language dropdown menu is set to English. The main content area is titled "Configure Internet Connection - PPP User Name and Password". Below the title, there is a sub-header "Connect to Internet Quick Setup". The instructions state: "In order to establish the Internet connection, please enter PPP user name and password that your ISP has provided." There are two text input fields: "PPP User Name:" containing "test" and "PPP Password:" containing three dots. Below these fields, there is a section "Session established by:" with three radio button options: "Always On" (selected), "Dial on Demand" (with a sub-field "Disconnect if no activity for 5 minutes"), and "Manually Connect" (with a sub-field "Disconnect if no activity for 5 minutes"). At the bottom right, there are two buttons: "< Back" and "Next >".

9. Configure LAN side Settings window is shown. Enable the DHCP Server by checking “Enable DHCP Server on the LAN” and click Next.

ZTE中兴 Quick Start | Status | Advanced | Diagnostics | Management Language: English

Connect to Internet Quick Setup

Configure LAN side Settings

LAN side IP Address
Enter the DSL Router IP Address and Subnet Mask for LAN interface.

Primary IP Address: 192.168.1.1
Subnet Mask: 255.255.255.0
Host Name: ZXDSL831
Domain Name: home

Configure the second IP Address and Subnet Mask for LAN interface.

DHCP Server
Enabling DHCP Server on LAN interface can provide the proper IP Address settings to your computers.

Enable DHCP Server on the LAN

Start IP Address: 192.168.1.2
End IP Address: 192.168.1.254
Leased Time: 1 days 0 hours 0 minutes

< Back Next >

10. Now, a window with the title Quick Setup – Summary is shown, displaying the Settings / Configurations of Setup. Click Apply to accept and save the settings.

ZTE中兴 Quick Start | Status | Advanced | Diagnostics | Management Language: English

Connect to Internet Quick Setup

This Internet Connection -- Summary

Make sure that the settings below match the settings provided by your ISP.

Internet (WAN) Configuration:

VPI / VCI	8 / 81
Connection Type	PPPoE, LLC/SNAP, Always On
NAT	Enabled
WAN IP Address	Automatically Assigned
Default Gateway	Automatically Assigned
DNS Server	Automatically Assigned

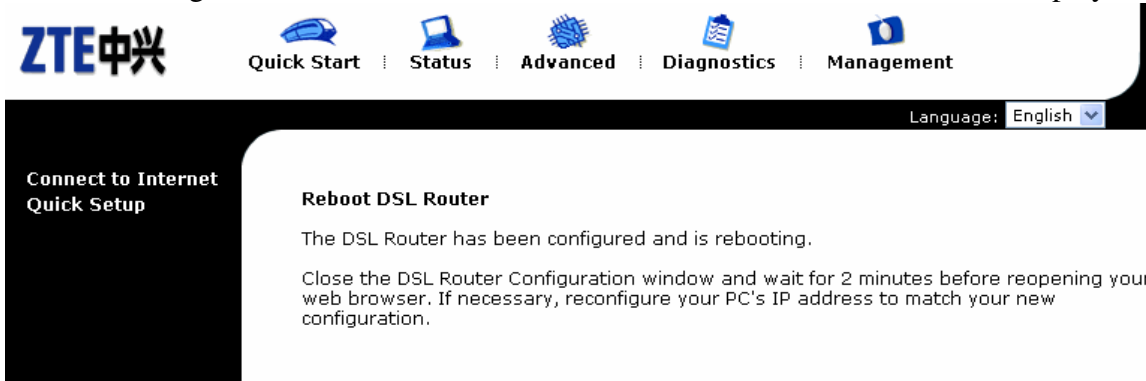
LAN Setting:

Primary LAN IP	192.168.1.1 /255.255.255.0
Secondary LAN IP	0.0.0.0 /0.0.0.0
DHCP Server	Enable
DHCP IP range	192.168.1.2 ~ 192.168.1.254
DHCP lease time	1 Days 0 Hours 0 minutes

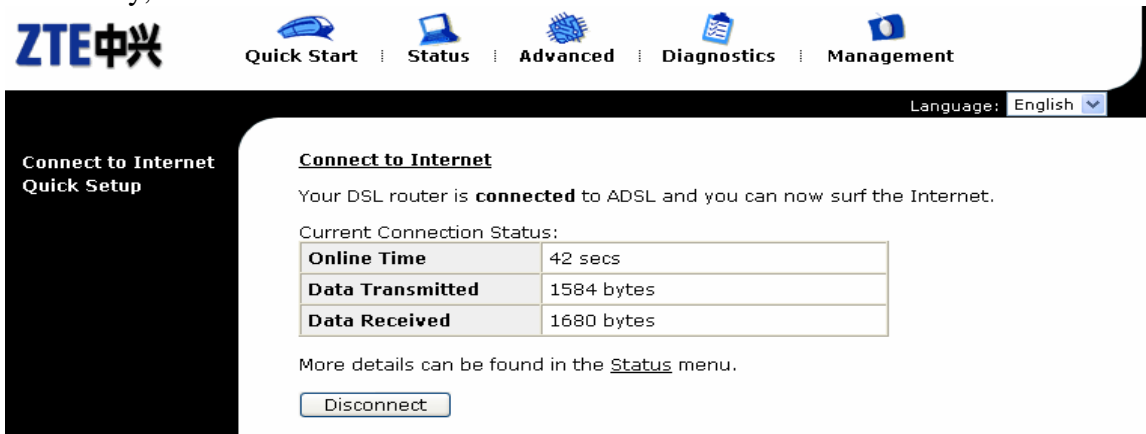
Click "Apply" to accept these settings. Click "Back" to make any modifications.

< Back Apply

11. Reboot DSL Router is shown with the message “The DSL Router has been configured and is rebooting”. Wait till the window with the title “**Connect to Internet**” is displayed.



12. Finally, the DSL router is connected.



13. Go again to Internet Protocol (TCP/IP) Properties and Select Obtain an IP address automatically and leave the DNS server addresses unchanged as shown in the picture below and press Ok.

